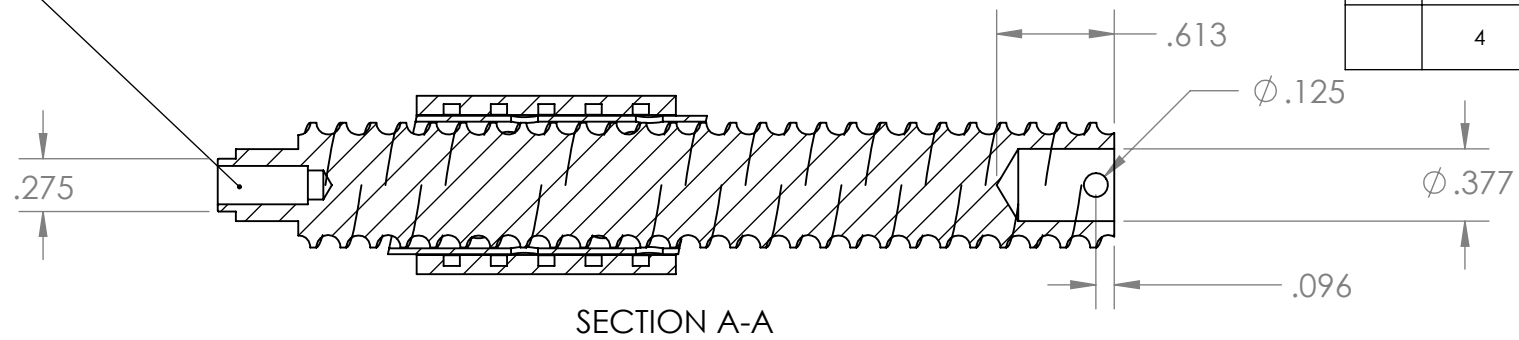


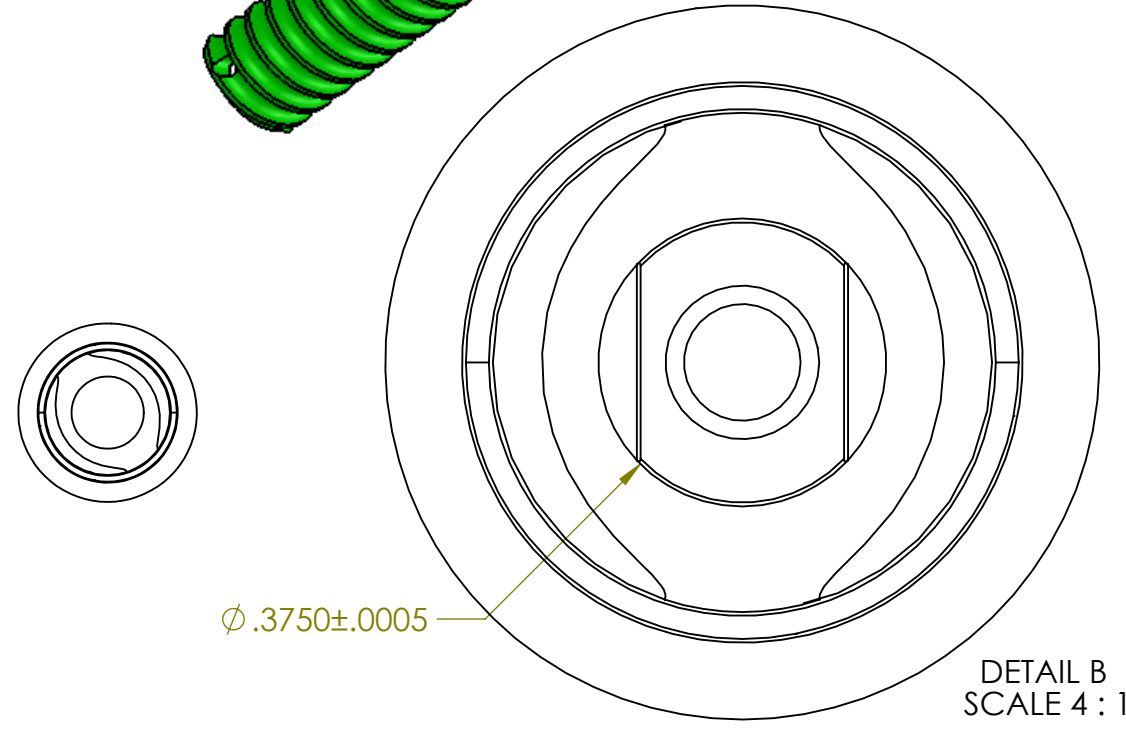
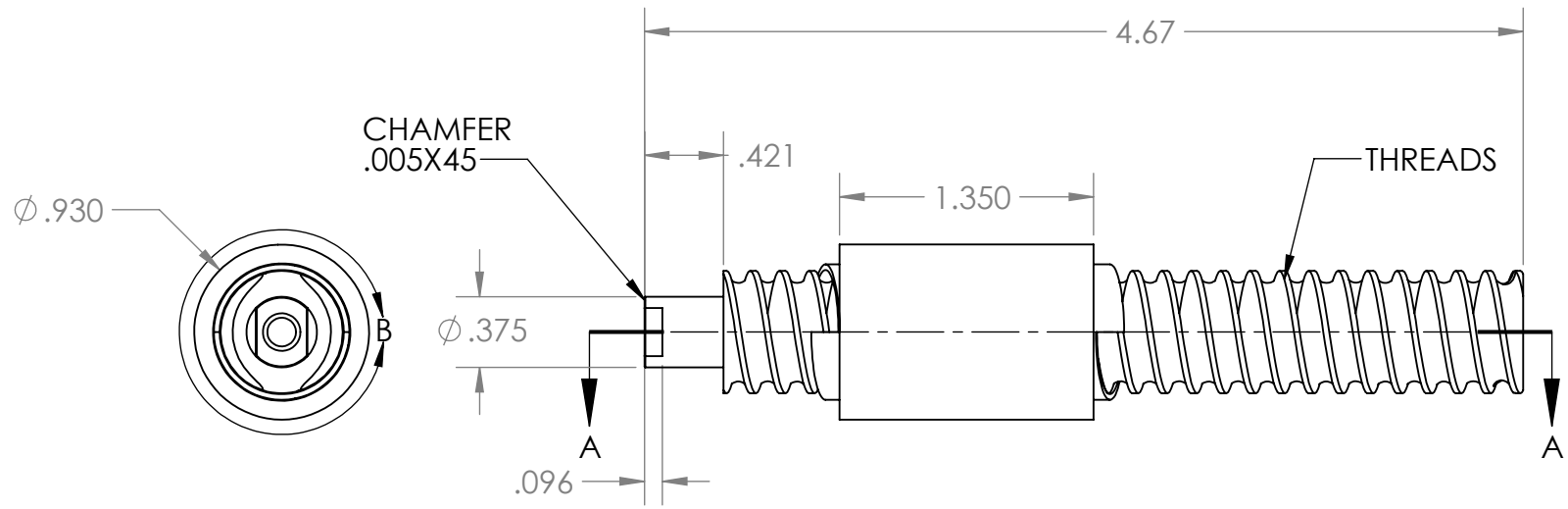
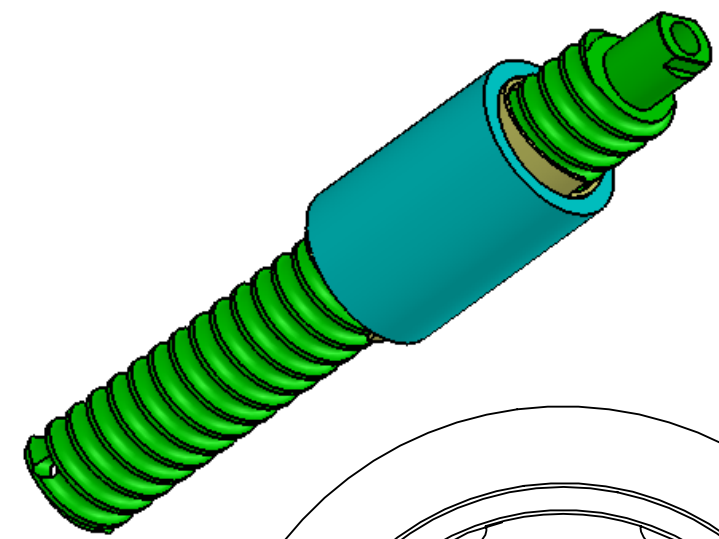
8 7 6 5 4 3 2 1

REVISIONS				
ZONE	REV.	DESCRIPTION	DATE	APPROVED
	1	RELEASED FOR QUOTE	01/18/2013	JDW
	2	REMOVED TURNING FROM BOTTOM OF PART	2/5/2013	JDW
	3	ADDED .027 TO LENGTH CHANGED FLATS TO .096 DEEP	2/7/2013	JDW
	4	ADDED MATERILA NOTES, CHANGED LEAD	2/11/2013	JDW

DRILL & TAP 10-32
.50 DP




SECTION A-A



- NOTES:
1. FREEWHEELING BALLSCREW, ROLL FORMED THREADS
 2. MATERIAL: 1018 STEEL, CASE HARDENED
 3. THREADS:
MAJOR DIAMETER: .625
LEAD: .333
DOUBLE THREAD
RIGHT HAND
FINISH, 12μIN
 4. SHIP WITHOUT STOP PIN. COVER ENDS W VINYL CAPS

PROPRIETARY AND CONFIDENTIAL
THE INFORMATION CONTAINED IN THIS DRAWING IS THE SOLE PROPERTY OF Bennett Marine Inc. ANY REPRODUCTION IN PART OR AS A WHOLE WITHOUT THE WRITTEN PERMISSION OF Bennett Marine Inc IS PROHIBITED.

UNLESS OTHERWISE SPECIFIED:		NAME	DATE	 Bennett Marine 550 Jim Moran Blvd Deerfield Beach, FL 33442
DIMENSIONS ARE IN INCHES TOLERANCES: FRACTIONAL ± 1/16 ANGULAR: MACH ± BEND ± TWO PLACE DECIMAL ±.01 THREE PLACE DECIMAL ±.005		DRAWN		
INTERPRET GEOMETRIC TOLERANCING PER: ANSI Y-14		CHECKED		TITLE: BALL SCREW ASSY, BQE
MATERIAL		ENG APPR.		SIZE B DWG. NO. BQE3 Rev4 REV 4
FINISH		MFG APPR.		SCALE: 1:1 WEIGHT: SHEET 1 OF 1
NEXT ASSY	USED ON	Q.A.		
APPLICATION		COMMENTS:		
DO NOT SCALE DRAWING				

8 7 6 5 4 3 2 1