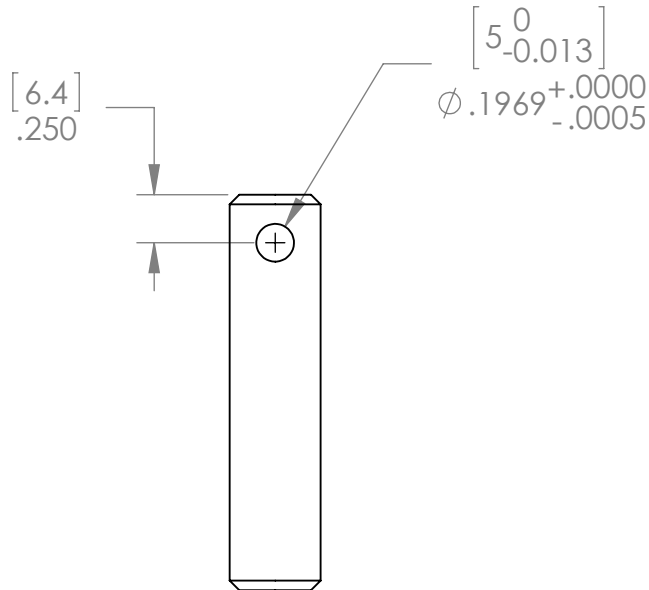


.05 [1.3] X 45°
 2 PLACES



SHEET 1 OF 1

THE INFORMATION CONTAINED IN THIS DRAWING IS THE SOLE PROPERTY OF CAMCO MFG. INC.. ANY REPRODUCTION IN PART OR AS A WHOLE WITHOUT THE WRITTEN PERMISSION OF CAMCO MFG. INC. IS PROHIBITED.

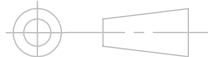
CAMCO MFG. INC.

GREENSBORO, NC, USA

- NOTES :
1. ALL DIMS IN [] ARE IN MILLIMETERS.
 2. REMOVE ALL SHARP EDGES.
 3. MATERIAL : Q235 STEEL
 4. FINISH : MILL
 5. WEIGHT : .097 lbs [.044 kg].

TOLERANCES
 (UNLESS SHOWN)
 .XXX ± .005 (.13 mm)
 .XX ± .020 (.51 mm)
 X/X ± 1/32 (.8 mm)
 ANGLE ± 0°30'
 FINISH 125 ✓ (3.2)

THIRD ANGLE PROJECTION



TITLE DRIVE SHAFT, ELECTRIC TONGUE JACK

DATE: 1/23/2013	SCALE: 1:1	SIZE	DRAWING NO.	REV.
DES	DRN BAA	CHK	A	1008193
				1