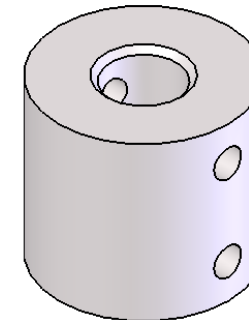
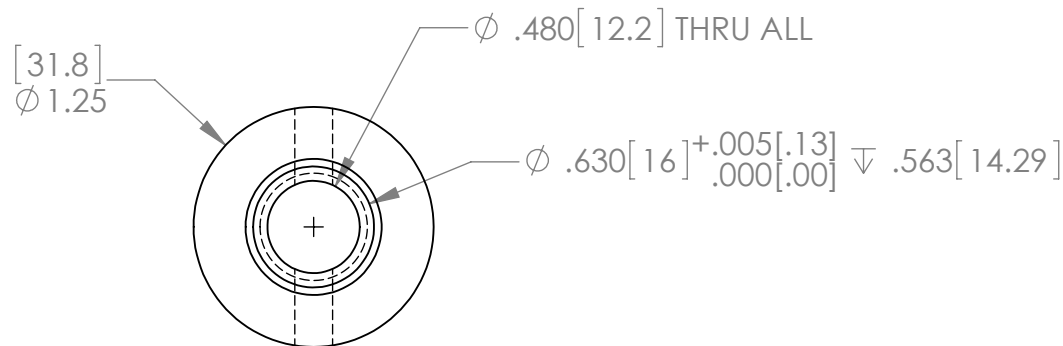


SECTION A-A



SHEET 1 OF 1

NOTES :

1. ALL DIMS IN [ ] ARE IN MILLIMETERS.
2. REMOVE ALL SHARP EDGES.
3. MATERIAL : 20Mn
4. FINISH : CASE HARDEN -  
0.03 [0.76] MINIMUM DEPTH,  
MINIMUM HARDNESS 50 HRC
5. WEIGHT : 0.027 lbs [0.012 kg].

THE INFORMATION CONTAINED IN THIS DRAWING IS THE SOLE PROPERTY OF CAMCO MFG. INC.. ANY REPRODUCTION IN PART OR AS A WHOLE WITHOUT THE WRITTEN PERMISSION OF CAMCO MFG. INC. IS PROHIBITED.

TOLERANCES  
(UNLESS SHOWN)  
.XXX ± .005 (.13 mm)  
.XX ± .020 (.51 mm)  
X/X ± 1/32 (.8 mm)  
ANGLE ± 0°30'  
FINISH 125 ✓ (3.2)

THIRD ANGLE PROJECTION



**CAMCO MFG. INC.**

GREENSBORO, NC, USA

TITLE COUPLING, DRIVE SHAFT, ELECTRIC TONGUE JACK

DATE: 1/23/2013		SCALE: 1:1	SIZE	DRAWING NO.	REV.
DES	DRN BAA	CHK	A	1008188	1