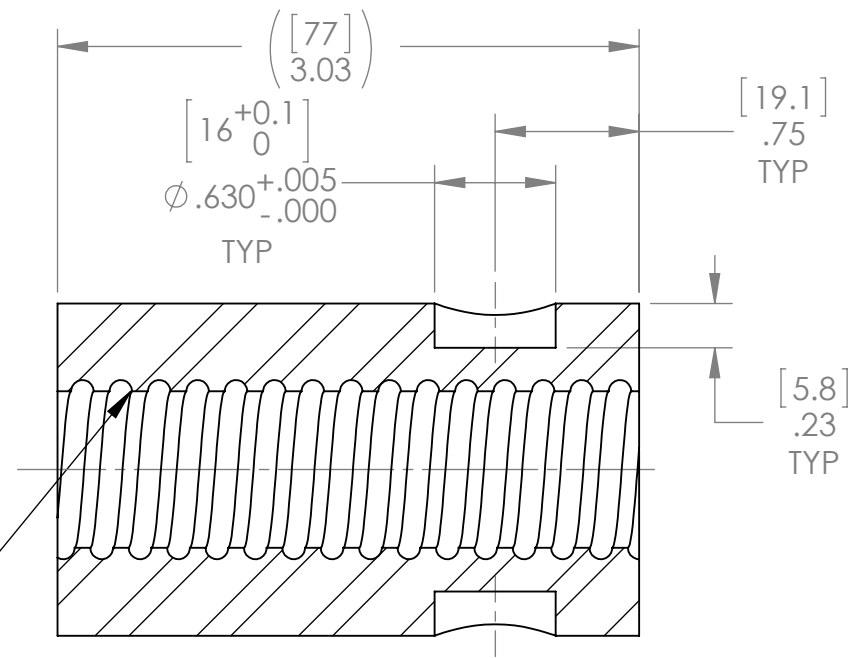
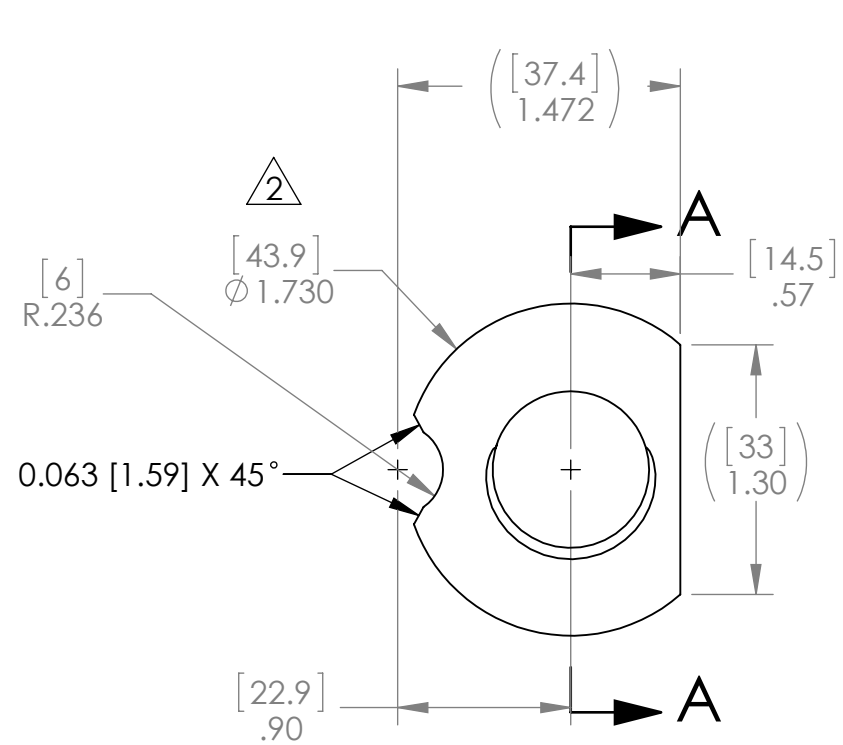


REV.	DESCRIPTION	DATE	BY
2	UPDATED DIMENSION FOR TUBE CLEARANCE	2/7/2013	BAA



M20 BALL SCREW  
 LEAD: 5  
 RIGHT HAND THREAD  
 NUT LENGTH MUST BE SUFFICIENT TO  
 ACCOMMODATE 2 BALL CIRCUITS AND  
 RELEVANT RECIRCULATORS

- NOTES :
1. ALL DIMS IN [ ] ARE IN MILLIMETERS.
  2. REMOVE ALL SHARP EDGES.
  3. MATERIAL : 20 Mn
  4. FINISH : CASE HARDEN - 0.030" [0.762] DEEP TO MAX HARDNESS MINIMUM HARDNESS OF 5 8Rc
  5. WEIGHT : 1.37 lbs [0.62 kg].

THE INFORMATION CONTAINED IN THIS DRAWING IS THE SOLE PROPERTY OF CAMCO MFG. INC.. ANY REPRODUCTION IN PART OR AS A WHOLE WITHOUT THE WRITTEN PERMISSION OF CAMCO MFG. INC. IS PROHIBITED.					
TOLERANCES (UNLESS SHOWN) .XXX ± .005 (.13 mm) .XX ± .020 (.51 mm) X/X ± 1/32 (.8 mm) ANGLE ± 0°30' FINISH 125 ✓(3.2)			<b>CAMCO MFG. INC.</b> GREENSBORO, NC USA		
TITLE BALL NUT, ELECTRIC TONGUE JACK					
DATE: 1/7/2013		SCALE: 1:1	SIZE	DRAWING NO.	REV.
THIRD ANGLE PROJECTION		DES	DRN BAA	CHK	B
		B		1008187	2